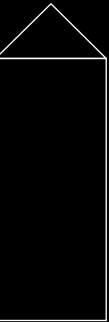
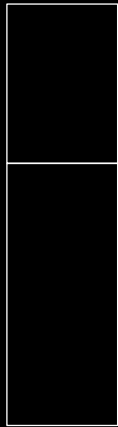
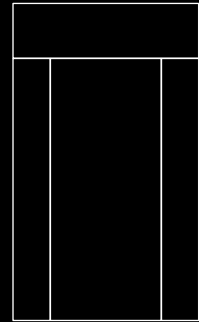
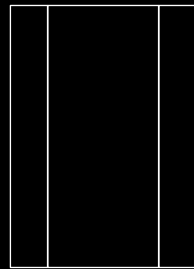
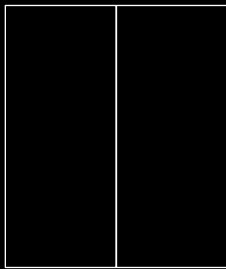
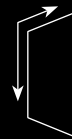




Doors to endless possibilites





Up to 2 x 5 m

Maximum door leaf dimensions 2 x 5 m. Each construction may be additionally extended by fixed elements or by glazing.



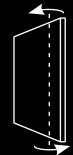
Up to 500 kg

This impressive maximum door leaf weight enables us to experiment with a variety of finishes, disregarding their weight.



Two-sided

Possibility of upgrading the door leaf for inwards and outwards opening.

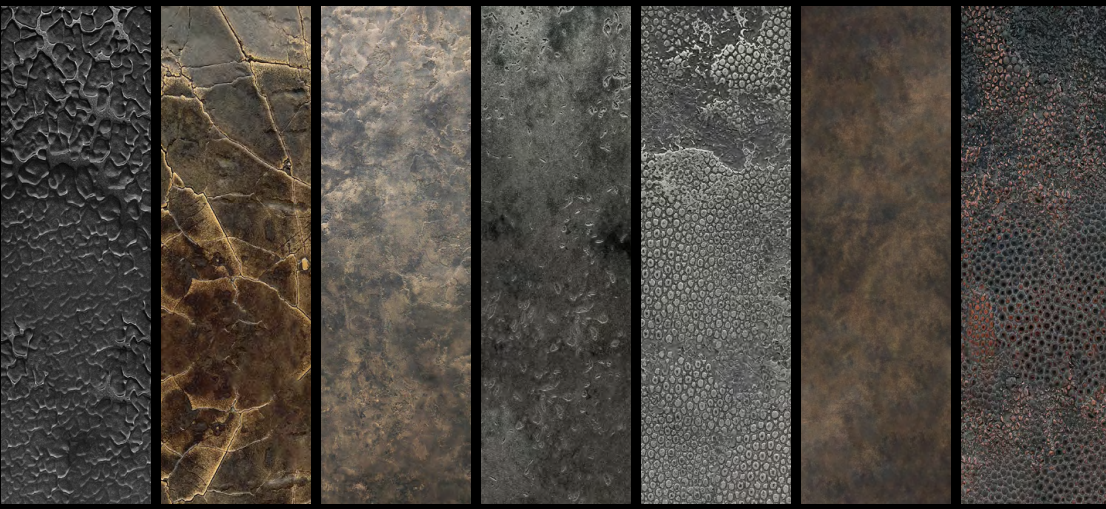


Technology

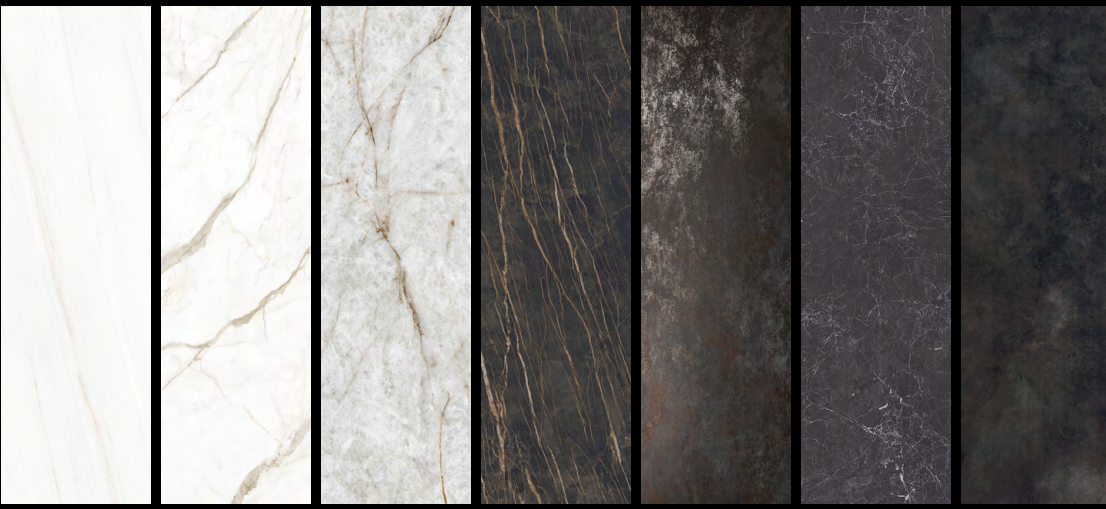
State-of-the-art technology and innovative fixing system ensure top quality of performance and use, as well as smooth door opening, disregarding the weight of the door leaf.



LUXURIOUS
LIQUID METAL FINISHES



LUXURIOUS
CERAMIC FINISHES



LUXURIOUS
WOODEN EFFECT
FINISHES





Antique Bronze Smooth
Liquid metal



Ceres



Patagonia
Natural stone

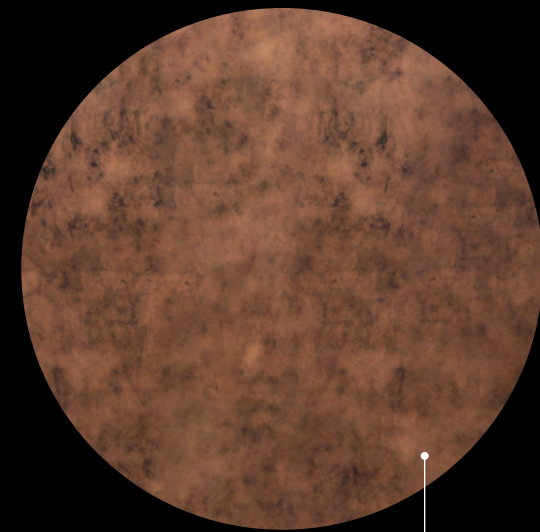


Mono



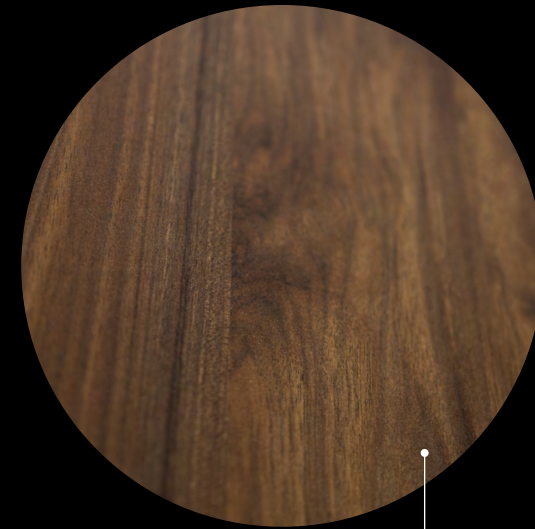
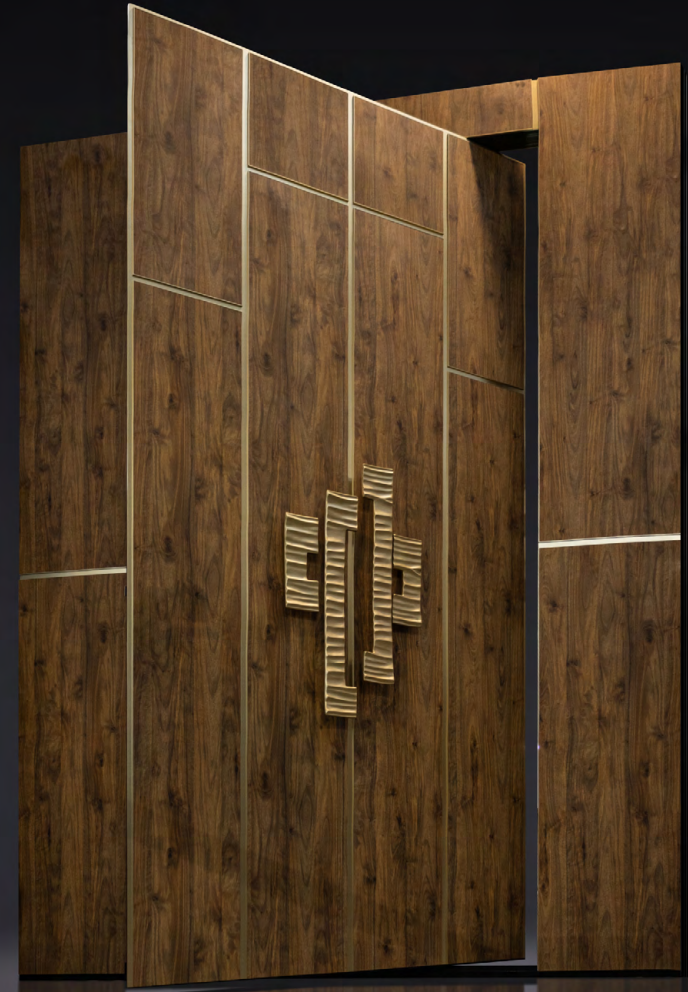
Ossido Nero
Ceramic





Antique Copper Smooth
Liquid metal





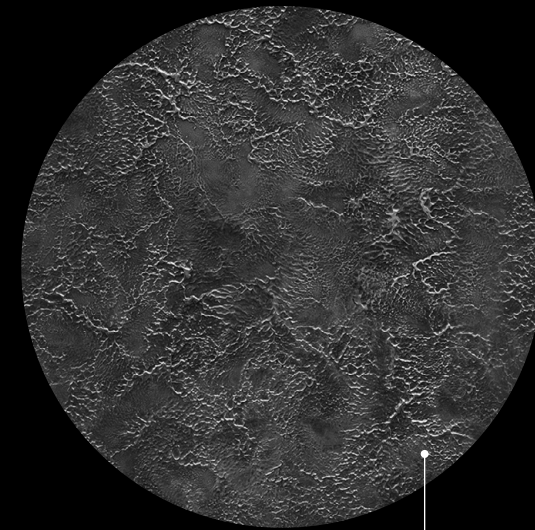
Noyer Appalaches
HPL





Transparent Glass
ESG glass

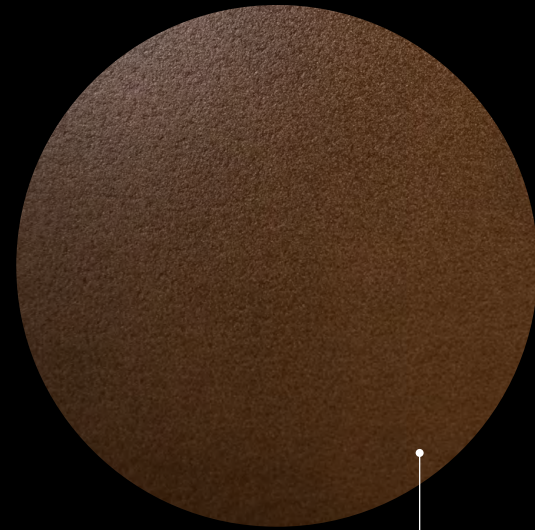
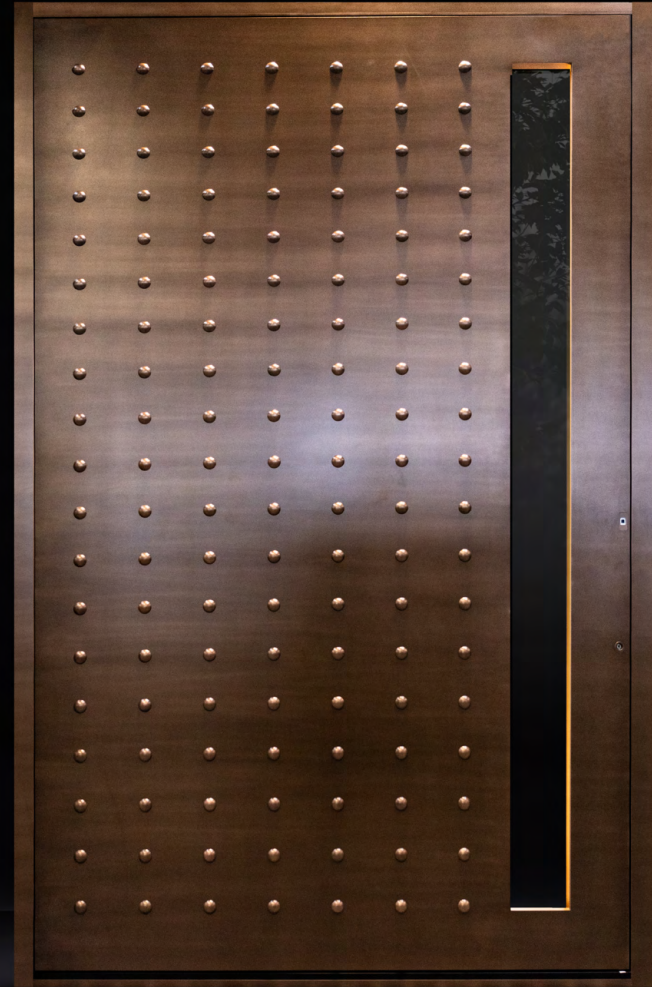




Windy Black Bronze
Liquid metal



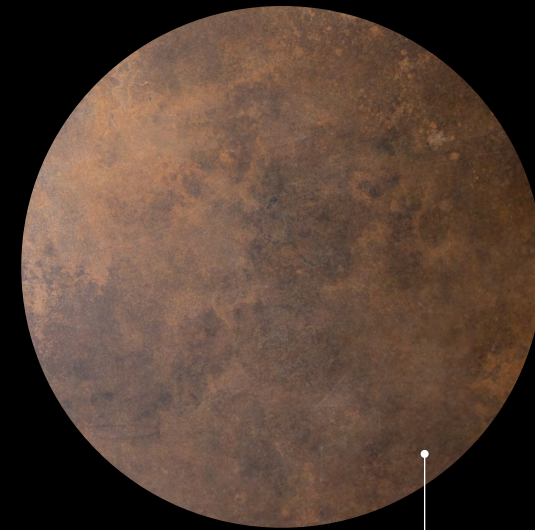
Troya



Troya
Powder coating

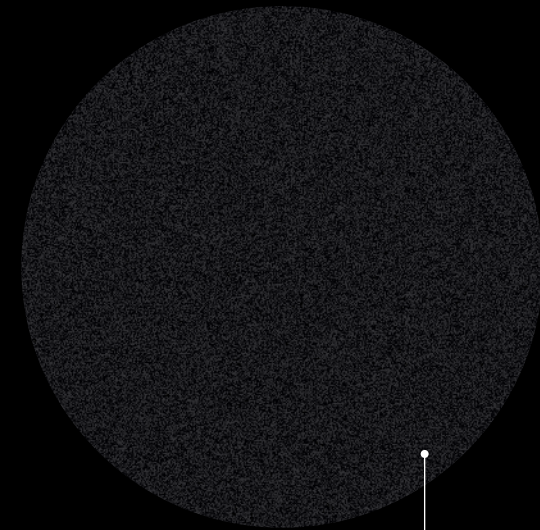


Struttura



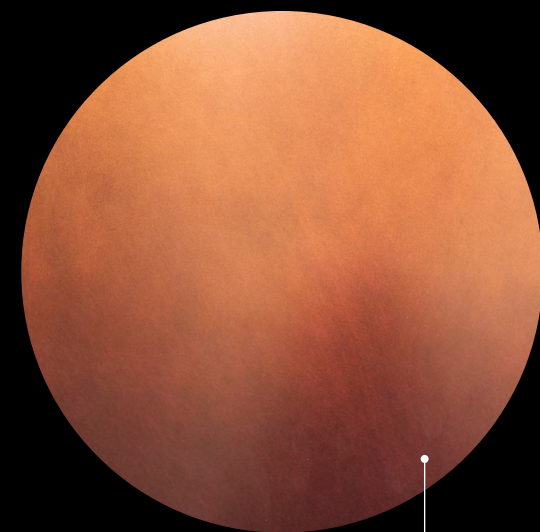
Ossido Bruno
Ceramic





RAL 9005 M
Powder coating





Tramonto M5
Copper sheet





American Walnut
Wooden veneer





RAL 9005 M
Powder coating

Black Wood
Wood effect heat-transfer film





Black Wood
Wood effect heat-transfer film





Black Glass
ESG glass

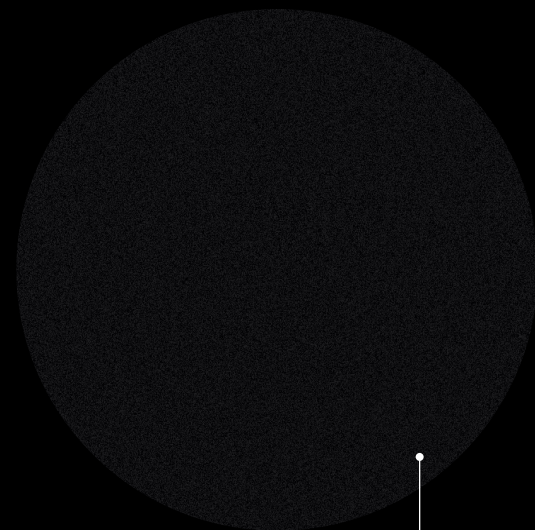




Walnut
Wood effect heat-transfer film

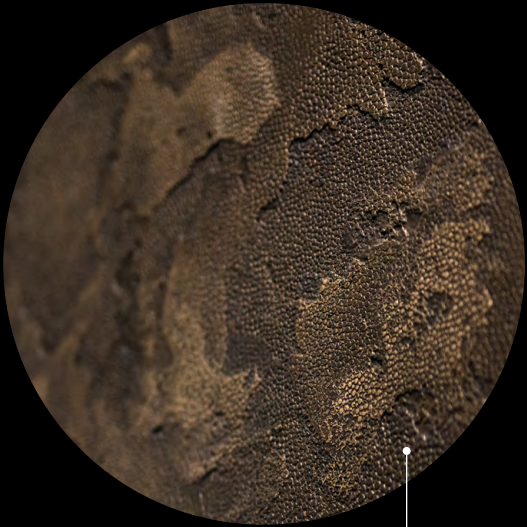
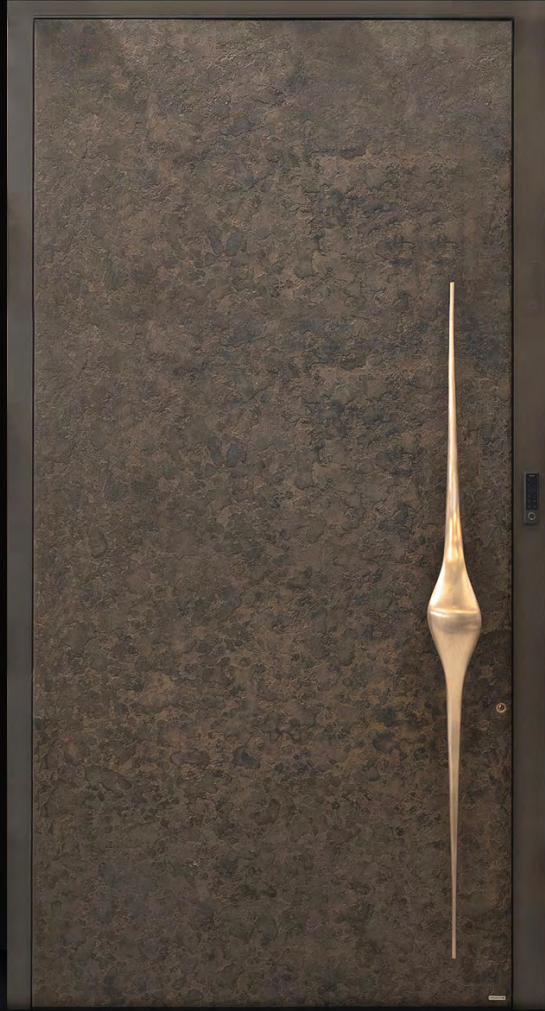
Himalaya Crystal
Ceramic





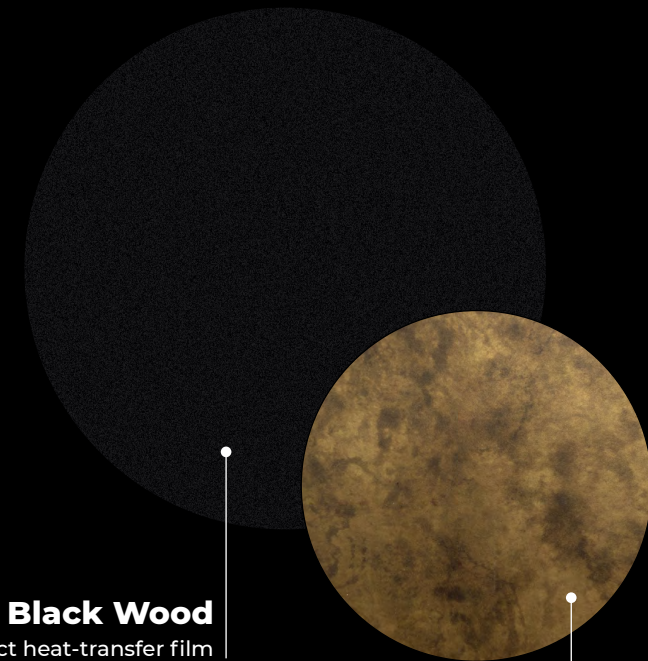
RAL 9011 M
Powder Coating





Antique Textured Bronze
Liquid metal



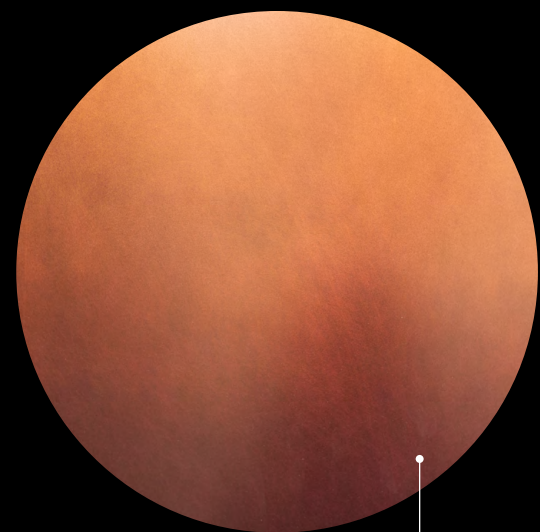


Black Wood
Wood effect heat-transfer film

Aged brass
Liquid metal

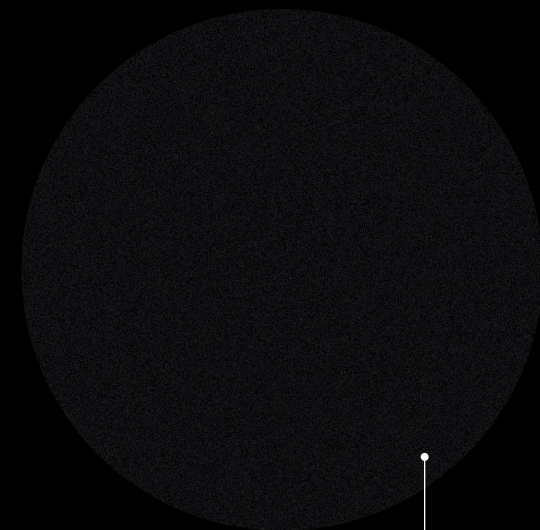


Lavaine

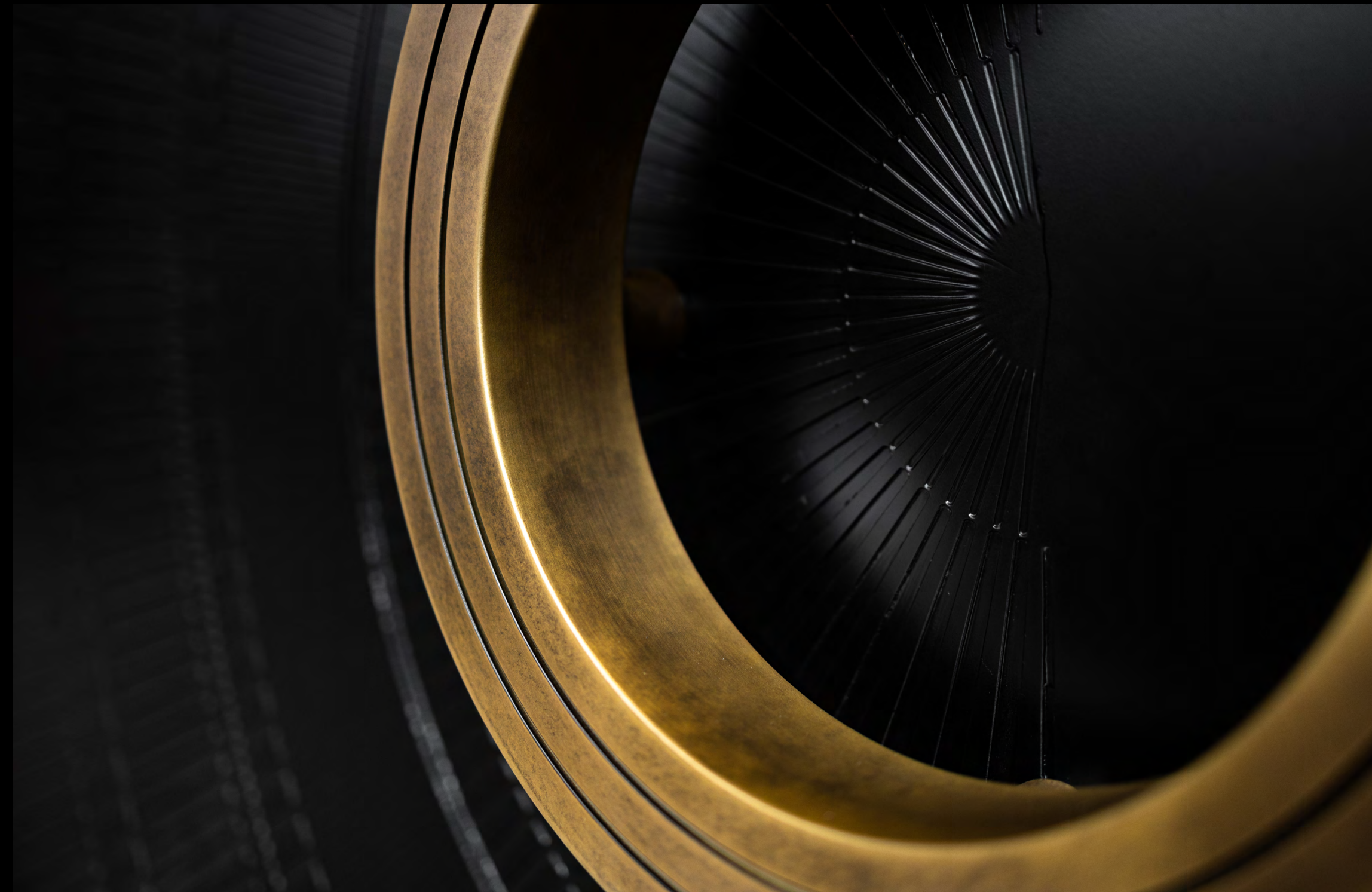


Tramonto M5
Copper sheet

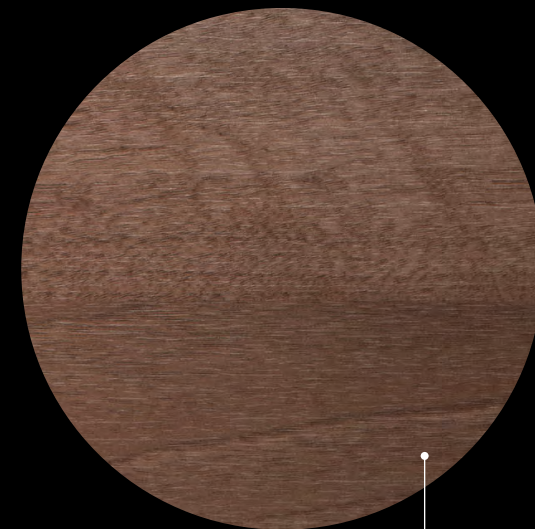




RAL 9005 M
Powder Coating



Sienna Noce



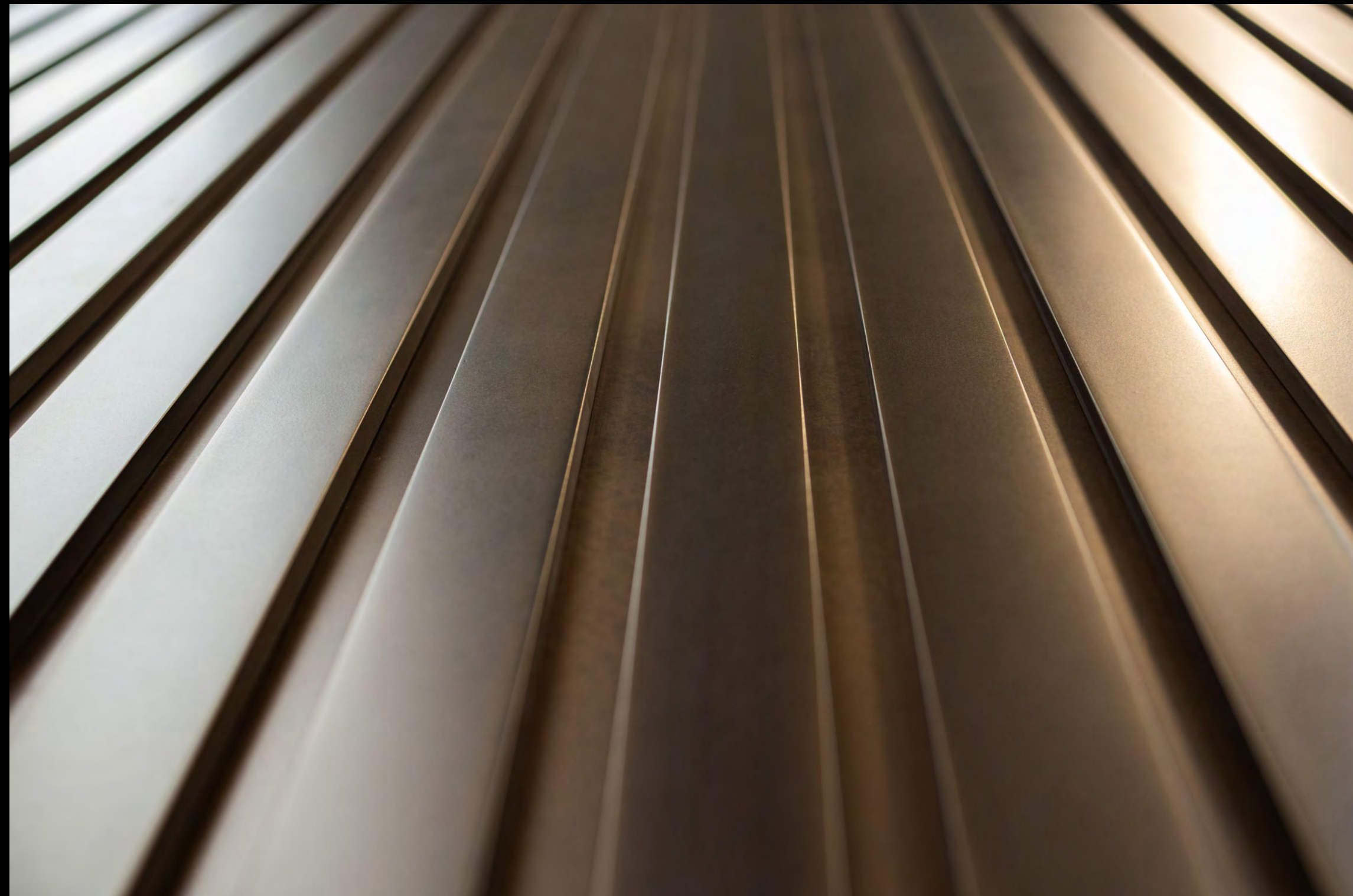
Sienna Noce
Wood effect heat-transfer film



Camelot



Camelot
Liquid metal





www.pivotdoors.de/en

The manufacturer reserve the right to introduce changes to product design and dimensions, as well as minor technological modification aimed at improvement of the door quality or functionality, without notice to the customer. Photos, dimensions and colours presented in the catalogue may differ insignificantly from the actual ones due to differences between printed version an the actual situation. The use of original colour chip charts rather than of the catalogue printout is recommended for selection of the colour or the sheathing material.

All the contents and graphics of this publication constitute property of RK Aluminium Robert Karasek, and may not be copied or duplicated unless upon the owner's consent.

